

# SMINT SOLUTION

TACTICAL INTERCEPTION ■ CEREBRO & IOTA 1G



## THE CEREBRO CORE TECHNOLOGY AND 1G IOTA IP PROBE INTEGRATED IN A TRANSPORTABLE RUGGEDIZED COMPUTER FOR TACTICAL OPERATIONS

SMINT is a tactical system designed to record, store, analyze and display in real time information. This system is able to monitor a wide range of protocols, including mail, voice over IP (VoIP), webmail, chat, web browsing (web-site reconstruction) ...

- Integration of IOTA-1G-MA with CEREBRO-TGT
- Analysis of traffic up to 1Gbits/s
- Can be combined with ADSL, WiFi or Satellite sensors
- Analysis of recorded PCAP files
- Storage designed to record days of traffic
- Ideal for close surveillance of your suspects.
- Possibility to have multiple operators working on the same central device through highly secured connection.



**ADVANCED  
SYSTEMS**

## GENERAL USE

SMINT can be plugged in the mirrored port of a switch or in an optical tap for example. Once plugged, the system records the IP traffic, classifies and stores it in a database.

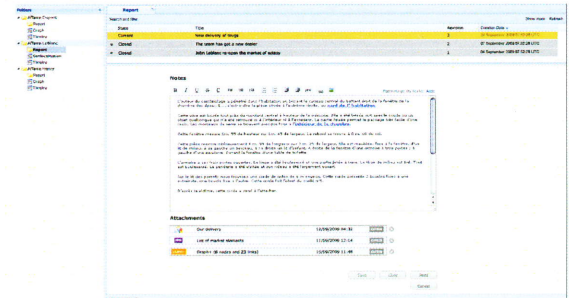
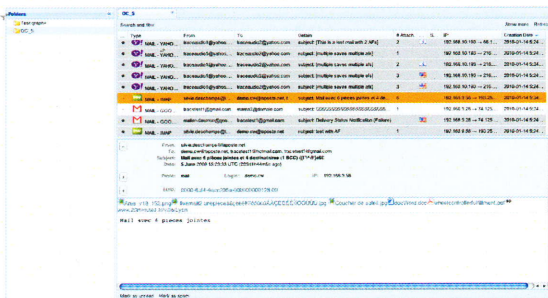
SMINT is the integration of one IOTA IP probe and a CEREBRO core technology in a tactical form factor. The IOTA probe embedded in the SMINT is able to classify and reconstruct many IP network protocols. The analyzing processes of the IOTA probe are working on the most common used protocols: mail (SMTP, POP3, IMAP), Social Networking (facebook, twitter, ...), Webmail transactions (livemail, yahoo mail, gmail, ...) Voice over IP Conversations (RTP, SIP, ...) Chat sessions (MSN, Yahoo!, AIM, IRC, Paltalk, Jabber, Gtalk, ...), Web browsing (Posted messages, Website reconstruction : browsing session monitoring), ...

## EMBEDDED CAPACITY OF TARGETING

Thanks to the CEREBRO-TGT embedded, the investigator can create targeting rules to filter incoming traffic with advanced targeting criteria (email addresses, phone numbers, keywords, etc.).

## SENSORS AVAILABLE

SMINT is the perfect answer for tactical operations. It can natively be plugged on any IP network, but it can also be used in combination with Satellite sensors, ADSL tap or even WiFi probes. For example, with the WiFi probe, you will be able to select a specific access point (Open, WEP encrypted or WPA encrypted (automatically break)) and then have access to all communications going through this access point.



## AN EXTENDED AND MULTILINGUAL SEARCH ENGINE

Thanks to the ORACLE database indexation and to the intelligent search engine, SMINT will return valuable data to each keyword request. SMINT is built on a cross search engine which gives always appropriate and relevant results. This research can be done in many different languages (English, French, German, Arabic, Russian ...)



**ADVANCED  
SYSTEMS**

P.O. BOX: 500439  
Internet City - Dubai - U.A.E.  
Phone: +971 4 457 0331  
Fax: +971 4 457 0332  
Email: [contact@advancedsystems.ae](mailto:contact@advancedsystems.ae)